



General Visitors

All the information you need to visit Haddon Hall this season.
We look forward to welcoming you.



Opening Times & Admission Prices

Open Daily

12th April – 31st October
7 days a week

General

10:30am – 5pm
Last entry at 4pm

Christmas

1st – 23rd December
10:30am – 4pm
Last entry at 3pm

Car Park

10:00am onwards

Restaurant

10:00am – 4:30pm

Adult	(16 and above)	£16.75
Concession	(Over 60)	£15.75
Student	(With a valid ID)	£14.25
Child	(Age 0-15)	FREE

Historic House Association (HHA)

Members

Free admission with valid card (excluding special events and Christmas)

Gardeners World

Free admission for one full paying adult with a valid 2-for-1 entry card

[BUY TICKETS](#)

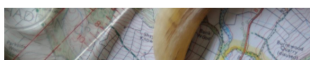
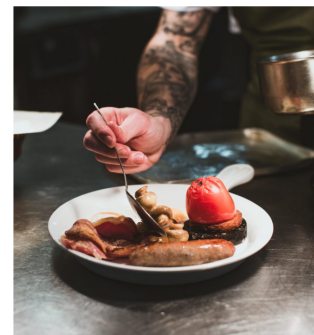
Food & Drink

Our recently renovated restaurant is open to both ticket holders and members of the general public.

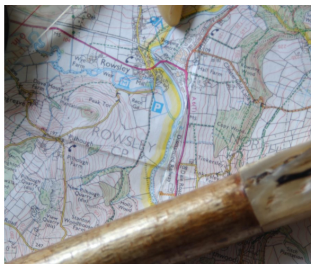
Situated in the 17th Century stable block adjacent to the Duke's Tower entrance, the restaurant provides a wide array of dishes to suit all tastes; from fine dining to traditional afternoon tea and light lunches to coffee-time treats.

Find more information, including menus and opening times, on our [Restaurant page](#).

Alternatively, why not visit our Estate hotel, [The Peacock at Rowsley](#) for a delicious lunch in its atmospheric bar or treat yourself to a superb meal in the award winning, three AA star fine dining restaurant.



Parking



Parking

Car Parking (per car) – £3.00

For further information on how to get here, see the directions section below.

Our car park is situated across the road from the hall and grounds, on the opposite side of the A6.

The distance from the car park to the Hall is approximately 366 metres and includes some gravel surface and 30 steps. We ask that visitors take special care when crossing the busy A6 and note that the car park can become extremely crowded during special events, in which case, overflow parking is provided in the field beyond.

Directions

ROAD TRAIN BUS FOOT /
BICYCLE TAXI

By Road – Haddon Hall is situated on the A6 between Bakewell and Rowsley, 2 miles (3.2 km) south of Bakewell. The Hall has a dedicated car park on the A6.

If using Sat Nav or other navigation software, we recommend that you input directions specifically to our car park (A6, Bakewell, DE45 1LA) to avoid you being incorrectly directed to an off-road site. Alternatively, use directions for Bakewell or Rowsley, then follow the brown tourist signs for Haddon Hall. The car park is clearly signposted from both directions.

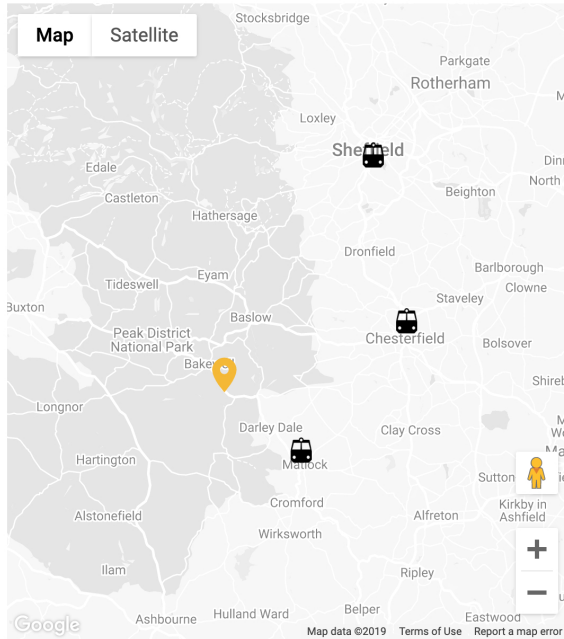
Address:

Haddon Hall
Bakewell
Derbyshire
DE45 1LA

T: 01629 812 855

E: info@haddonhall.co.uk

[Map with directions](#)



Tours

We run a variety of free and ticketed guided tours throughout the year:

Free Guided Tours of the Highlights of the Hall – every Monday except during the Christmas Period

If your visit is on a Monday you may wish to join one of our free, guided 'Highlights of the Hall' Tours, which will give you a brief introduction to the history of the Hall. These run at regular intervals

throughout the day, on a first come, first serve basis and are included in your admission price.

For all other tours, including Garden and Specialist Tours, or Countryside Walks, please refer to our [events page](#). If you wish to arrange a private tour of the Hall, please contact us on info@haddonhall.co.uk or 01629 810912.

Stay

For those wishing to extend their stay in the Peak District, our exquisite, award-winning hotel, The Peacock at Rowsley, sits just a stone's throw from Haddon Hall.

Situated in the heart of Derbyshire, close to the historic market town of Bakewell, the former manor house provides a truly

wonderful base for exploring all corners of the Peak District.

Visit www.thepeacockatrowsley.com to view availability, menus and for further information.



Gift & Plant Shop

Found at The Gatehouse is our Gift and Plant shop, brimming with exclusive souvenirs, artisanal wares, specialist plants, books, cards, jams, toys and china.

The gift shop also has a wealth of lovely treats for children, including history books,

medieval costumes, stationery, soft toys and games.

Our official guidebook is also on sale, which tells the captivating story of the Hall room by room.



Dogs, Fags and Bags

We adore dogs at Haddon Hall, but unfortunately cannot allow them into the Hall, gardens or grounds, aside from guide and support dogs. We are able to provide bowls of water for your dog in the car park, and welcome you to take a stroll on the public footpaths opposite the Hall. We sincerely apologise for any inconvenience.

Smoking & Vaping

Smoking or vaping is not permitted anywhere within the grounds and halls of

Haddon Hall.

Bags

For safety and security we do not allow any form of rucksack, large bag or tripods into the Hall. We suggest bags and photographic equipment of this description are left locked in your car or alternatively they can be stored in the safe care of the guides at the Duke's Tower Entrance.



Accessibility

We welcome all visitors to Haddon Hall, but please note that there are many uneven floors and steps around the site due to the age and architecture of the building.

If in doubt, we recommend reading our full accessibility statement below, or call ahead for further information.

[VIEW FULL ACCESSIBILITY STATEMENT](#)

Buggy Service

Haddon Hall operates a buggy service for visitors unable to navigate the 366 metres to the hall from the Gatehouse entrance. The buggy stops are at the entrance gatehouse and at the end of the drive near the restaurant. This service can be arranged via the car park or ticket office staff. Please note the service is not available in extreme weather and is subject to availability.

HOMEPAGE

VISIT

GENERAL VISITORS
FAMILIES
GROUP VISITS
INTERNATIONAL VISITORS
LEARNING

EVENTS

MERCATUM ARTISAN
MARKET

DISCOVER

HISTORY
PRIVATE TOURS
CONSERVATION
HOTEL
ESTATE
FILMS & TV
BLOG
CHARITIES
ICONIC

VENUE

WEDDINGS
CORPORATE EVENTS

GARDENS

THE TEAM
ARNE MAYNARD
ETHOS
EVENTS
VOLUNTEERING

RESTAURANT

SHOP

BUY TICKETS

CONTACT
ACCESSIBILITY
STATEMENT
TERMS & CONDITIONS
PRIVACY POLICY
CREDITS AND
COPYRIGHTS
FAQ



STAY CONNECTED

SUBMIT ➡➡